



Fields Farm
LONG EATON



*Artists impression:
Illustration is for guidance
purposes only, finishes
and treatments may vary
from that shown and
does not show proximity
of other properties.*

Stanton
estates

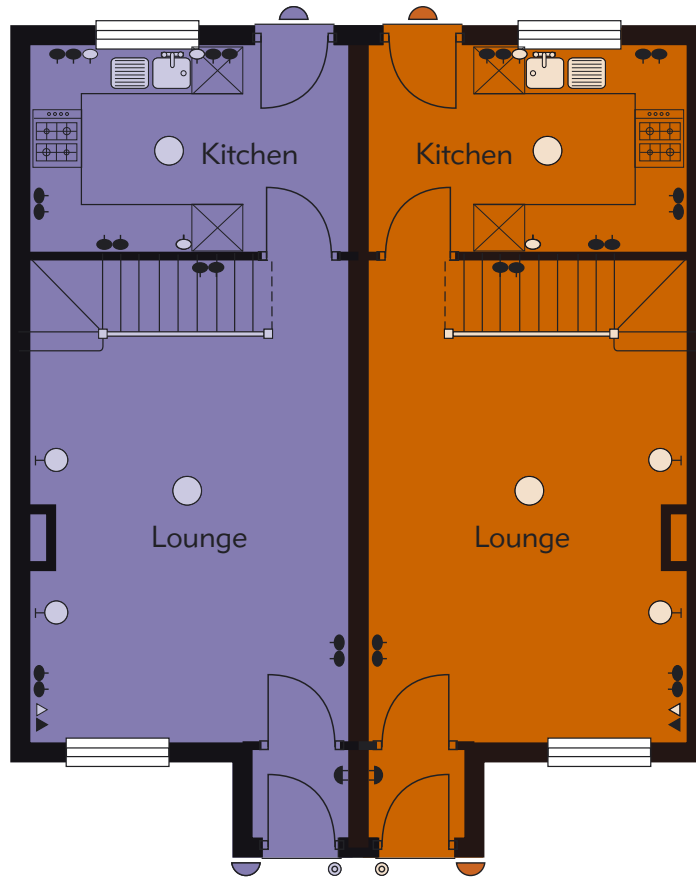
the Caesar

2 bedroom houses



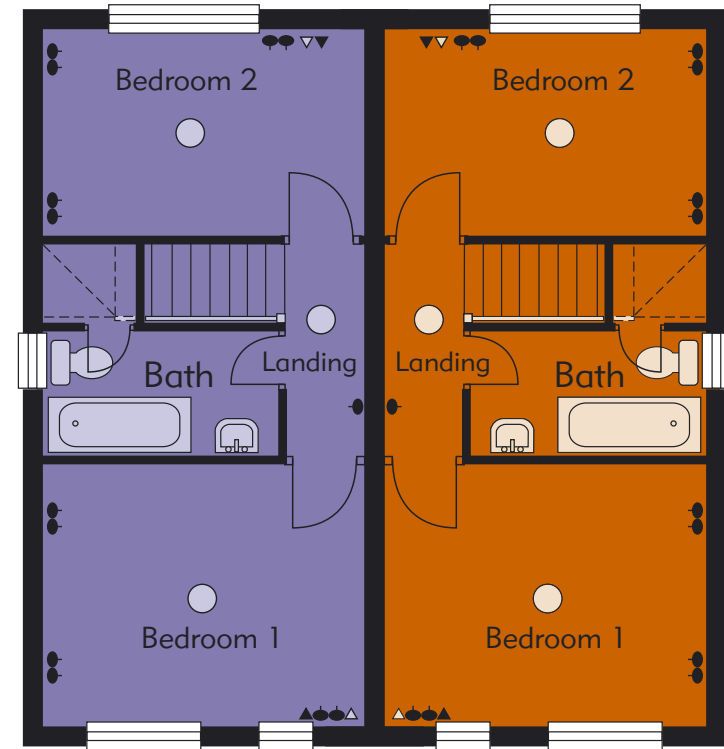
- Symbols Key:**
- Light Fitting
 - Wall Light
 - ⌋ Outside Light (wiring only)
 - Double Socket
 - Single Socket
 - Low Level Socket
 - ▷ TV Socket
 - ▶ BT Socket
 - ⊙ Doorbell
 - ⌋ Doorbell Chime

Please check the full specification and plans held by our representative as this does not form part of any contract nor does it constitute an offer. Room sizes are approximate & are subject to normal building tolerances (ie ± 75mm).



Ground Floor

Lounge 5.64m x 3.73m (17'10" x 12'3")
Kitchen 3.73m x 2.40m (12'3" x 7'10")



First Floor

Bedroom 1 3.73m x 3.06m (12'3" x 10'6")
Bedroom 2 3.73m x 2.50m (12'3" x 8'2")
Bathroom



Fields Farm
LONG EATON



*Artists impression:
Illustration is for guidance
purposes only, finishes
and treatments may vary
from that shown and
does not show proximity
of other properties.*

Stanton
estates

the Adonis

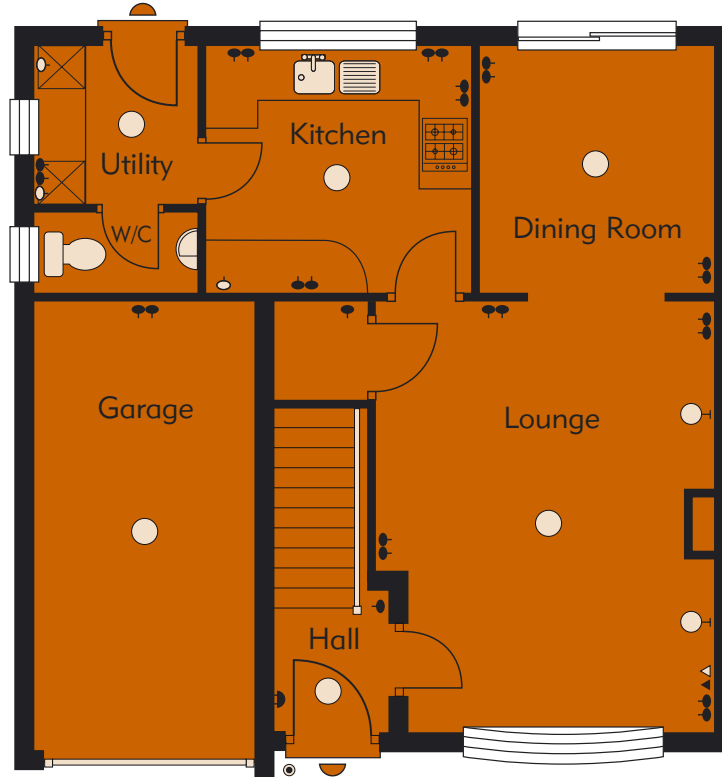
4 bedroom house



Fields Farm

LONG EATON

- Symbols Key:**
- Light Fitting
 - Wall Light
 - ◡ Outside Light (wiring only)
 - Double Socket
 - Single Socket
 - Low Level Socket
 - ▶ TV Socket
 - ▶ BT Socket
 - ⊙ Doorbell
 - ⊙ Doorbell Chime



Please check the full specification and plans held by our representative as this does not form part of any contract nor does it constitute an offer. Room sizes are approximate & are subject to normal building tolerances (ie ± 75mm).

Ground Floor

Lounge	4.85m max x 3.70m max	(15'10" x 12'2")
Kitchen	3.08m x 2.78m	(10'1" x 9'1")
Dining	2.78m x 2.68m	(9'1" x 8'9")
Utility	1.87m x 1.75m	(6'1" x 5'8")
WC		



First Floor

Bedroom 1	4.01m max x 5.00m max	(13'2" x 16'5")
En-suite		
Bedroom 2	3.10m max x 3.20m max	(10'2" x 10'6")
Bedroom 3	3.19m x 2.77m	(10'6" x 9'1")
Bedroom 4	2.68m x 2.50m	(8'9" x 8'2")
Bathroom		

Stanton
estates

Sales Office: Open Fri-Sun 12 - 4pm Tel: (0115) 946 2340 Head Office: 8 Old Chester Road, Derby, DE1 3SA. Tel: (01332) 293230 Fax: (01332) 385762 Web: www.stanton-estates.co.uk



the Adonis

4 bedroom house



Fields Farm
LONG EATON



*Artists impression:
Illustration is for guidance
purposes only, finishes
and treatments may vary
from that shown and
does not show proximity
of other properties.*

Stanton
estates

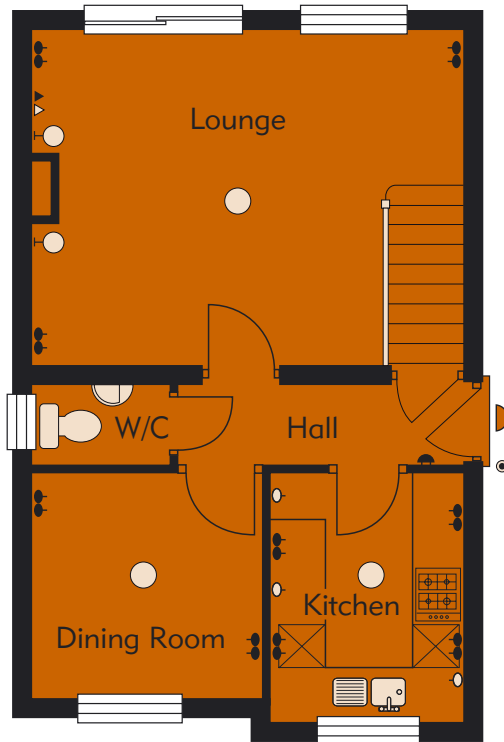
the Ceres

3 bedroom houses



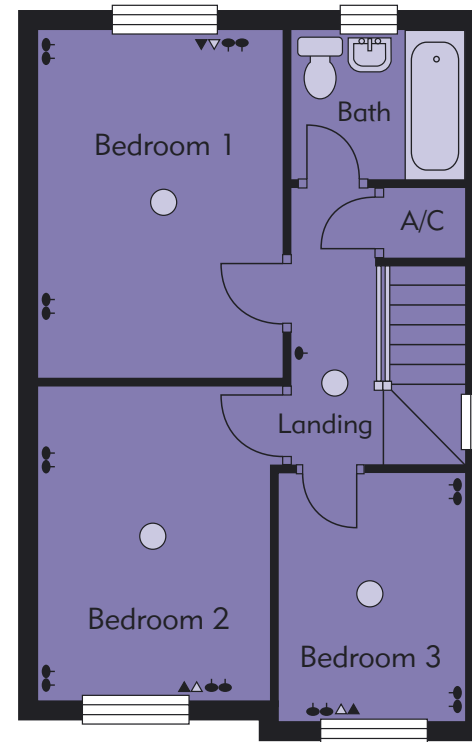
- Symbols Key:**
- Light Fitting
 - ◐ Wall Light
 - ⌋ Outside Light (wiring)
 - ⚡ Double Socket
 - Single Socket
 - Low Level Socket
 - ▶ TV Socket
 - ▶ BT Socket
 - ⊙ Doorbell
 - ⤵ Doorbell Chime

Please check the full specification and plans held by our representative as this does not form part of any contract nor does it constitute an offer. Room sizes are approximate & are subject to normal building tolerances (ie ± 75mm).



Ground Floor

Lounge	4.85m x 3.87m	(15'11" x 12'8")
Kitchen	2.85m x 2.15m	(9'4" x 7'0")
Dining	2.60m x 2.50m	(8'6" x 8'2")
WC		



First Floor

Bedroom 1	4.04m x 2.82m	(13'3" x 9'3")
Bedroom 2	3.52m x 2.60m	(13'6" x 8'6")
Bedroom 3	2.80m x 2.15m	(9'2" x 7'0")
Bathroom		



Fields Farm
LONG EATON



*Artists impression:
Illustration is for guidance
purposes only, finishes
and treatments may vary
from that shown and
does not show proximity
of other properties.*

Stanton
estates

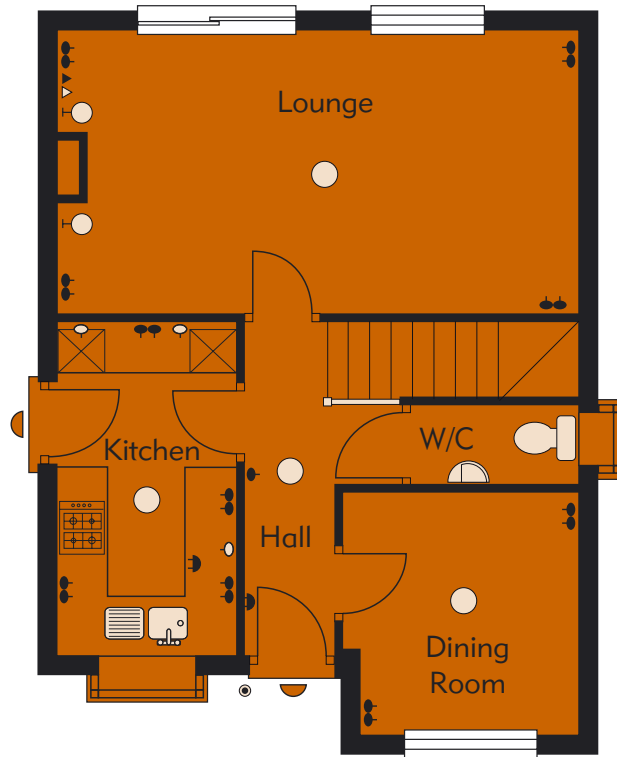
the *Diana*

3 bedroom houses



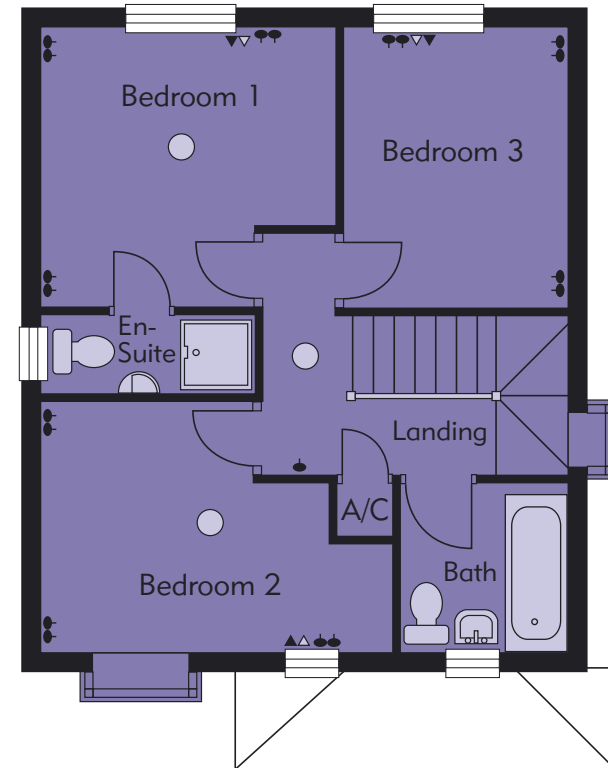
- Symbols Key:**
- Light Fitting
 - Wall Light
 - ⌋ Outside Light (wiring)
 - ⦿ Double Socket
 - Single Socket
 - Low Level Socket
 - ▷ TV Socket
 - ▶ BT Socket
 - ⦿ Doorbell
 - ⌋ Doorbell Chime

Please check the full specification and plans held by our representative as this does not form part of any contract nor does it constitute an offer. Room sizes are approximate & are subject to normal building tolerances (ie ± 75mm).



Ground Floor

Lounge	5.80m x 3.20m	(19'0" x 10'6")
Kitchen	3.65m x 2.05m	(12'0" x 6'8")
Dining	2.65m max x 2.70m	(8'8" x 8'10")
WC		



First Floor

Bedroom 1	3.27m x 3.20m	(10'9" x 10'6")
En-suite		
Bedroom 2	3.15m max x 2.75m max	(10'4" x 9'0")
Bedroom 3	3.20m x 2.50m	(10'6" x 8'2")
Bathroom		